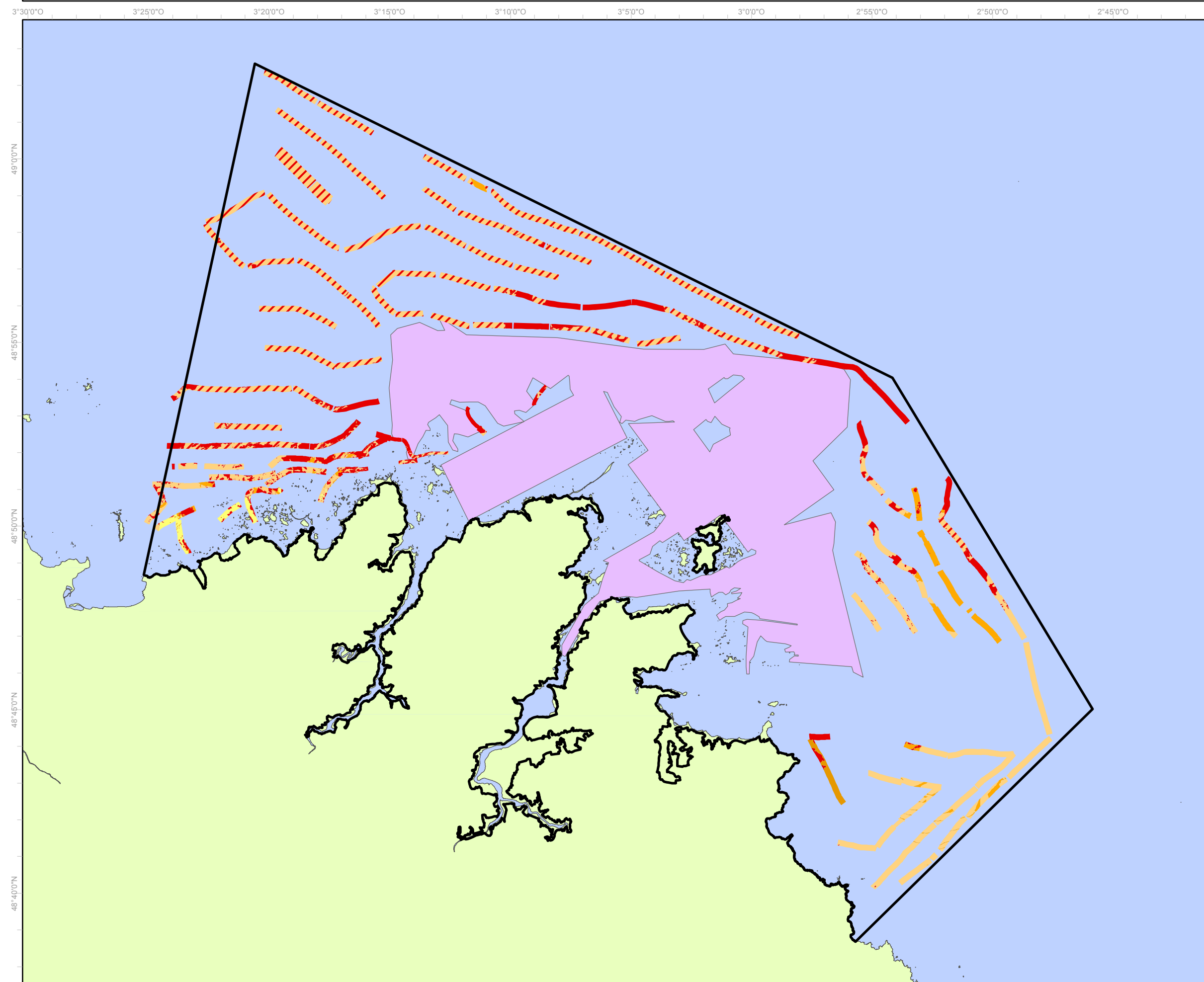
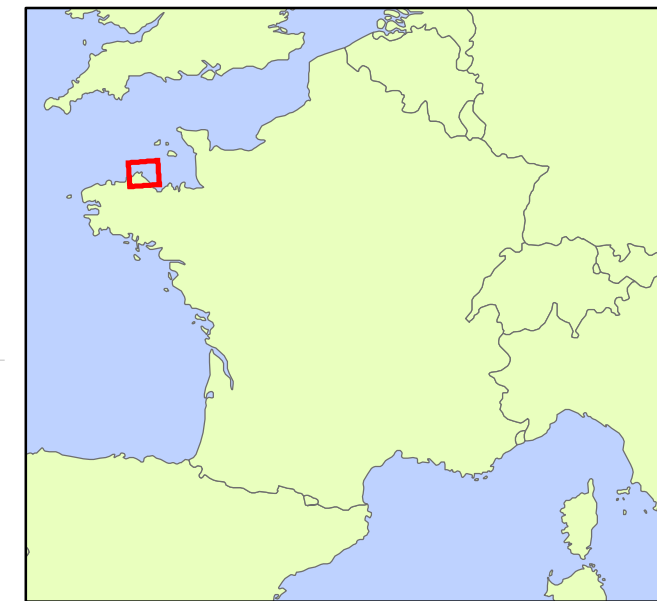












RÉPARTITION DES FORMATIONS SUPERFICIELLES  
FR5300010 - TRÉGOR GOËLO



-  Sables fins
-  Sables grossiers
-  Sables grossiers coquilliers
-  Sables grossiers envasés
-  Roches
-  Roches et sédiments très grossiers
-  Périmètre "Trégor Goëlo" FR5300010
-  Périmètre Rebet

Sources des données :

- SHOM, (cartes marines 7151, 7152 & 7153, 1998. A utiliser en complément des cartes et ouvrages nautiques)
- SHOM/IGN, 2007 (trait de côte historitt v1\_polygone)
- DREAL Bretagne
- Produit numérique REBENT, Ifremer

0 2 milles nautiques

0 4 km



Agence des  
aires marines protégées

système de coordonnées :  
RGF Lambert 93

MMN\_N2000\_DHFF\_FR5300010\_ObsTerrain\_Repartition\_formations\_superficielles\_EUR27\_A3pa\_20120828

réalisation :  
TBM - SARL Chauvaud - marché natura 2000 - Janvier 2012